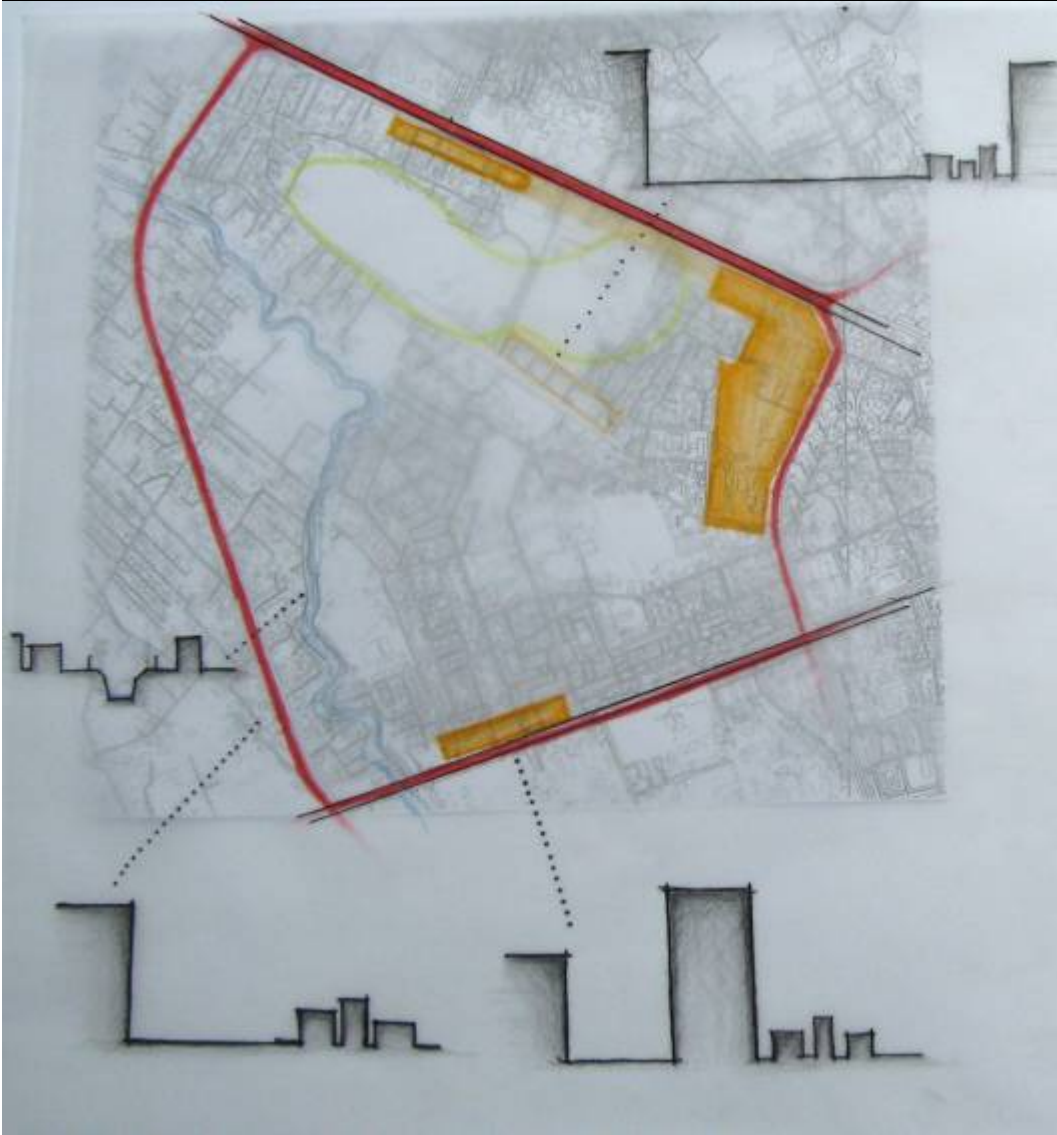


overcoming
boundaries

circulation & boundaries



external:

2 main avenues
2 parts of the city rings
volumes of high-rise buildings

internal:

river Lana
volumes of high-rise buildings
big voids


boundaries

disconnectivity



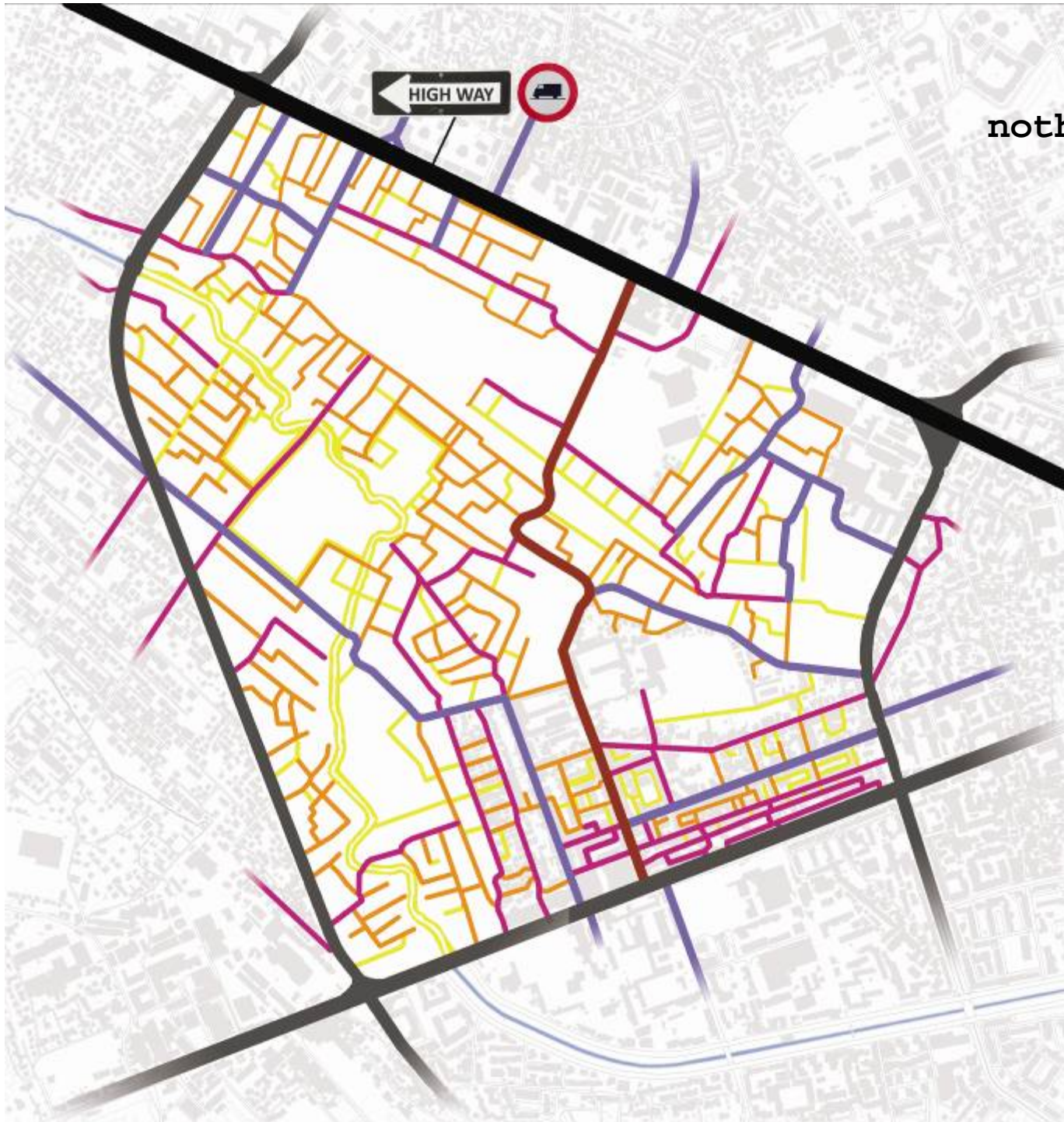


existing poles
of life

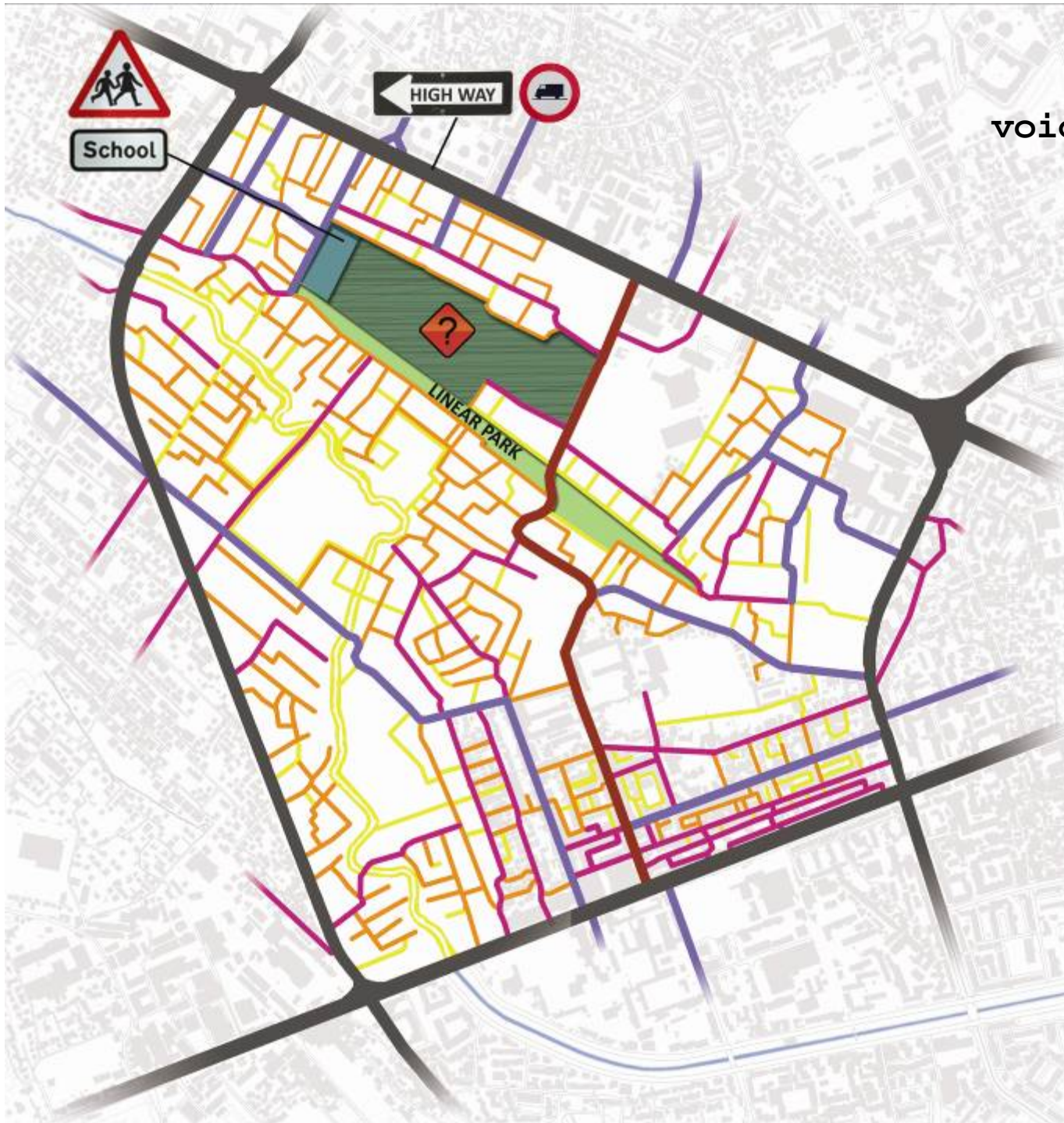
commercial 

neighborhood 

points of intervention



nothern arterial road



void -airport strip

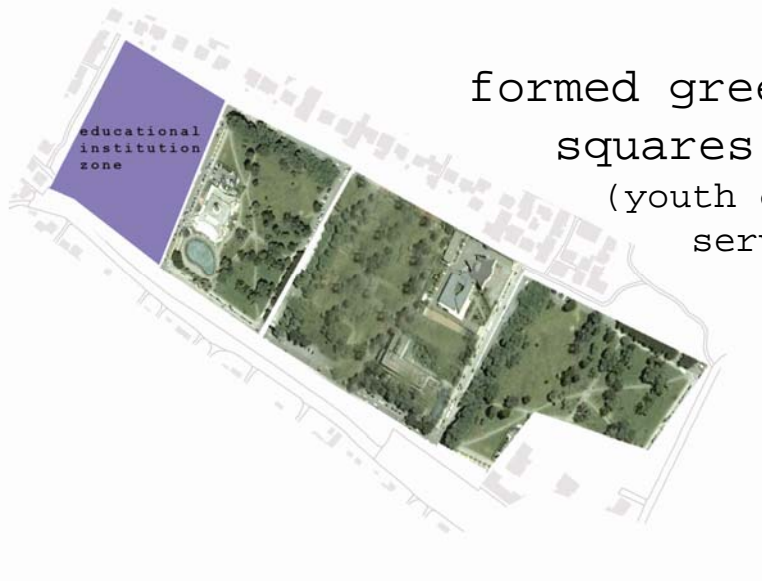


alternative uses of the void

big scale park
(refers to the whole city)

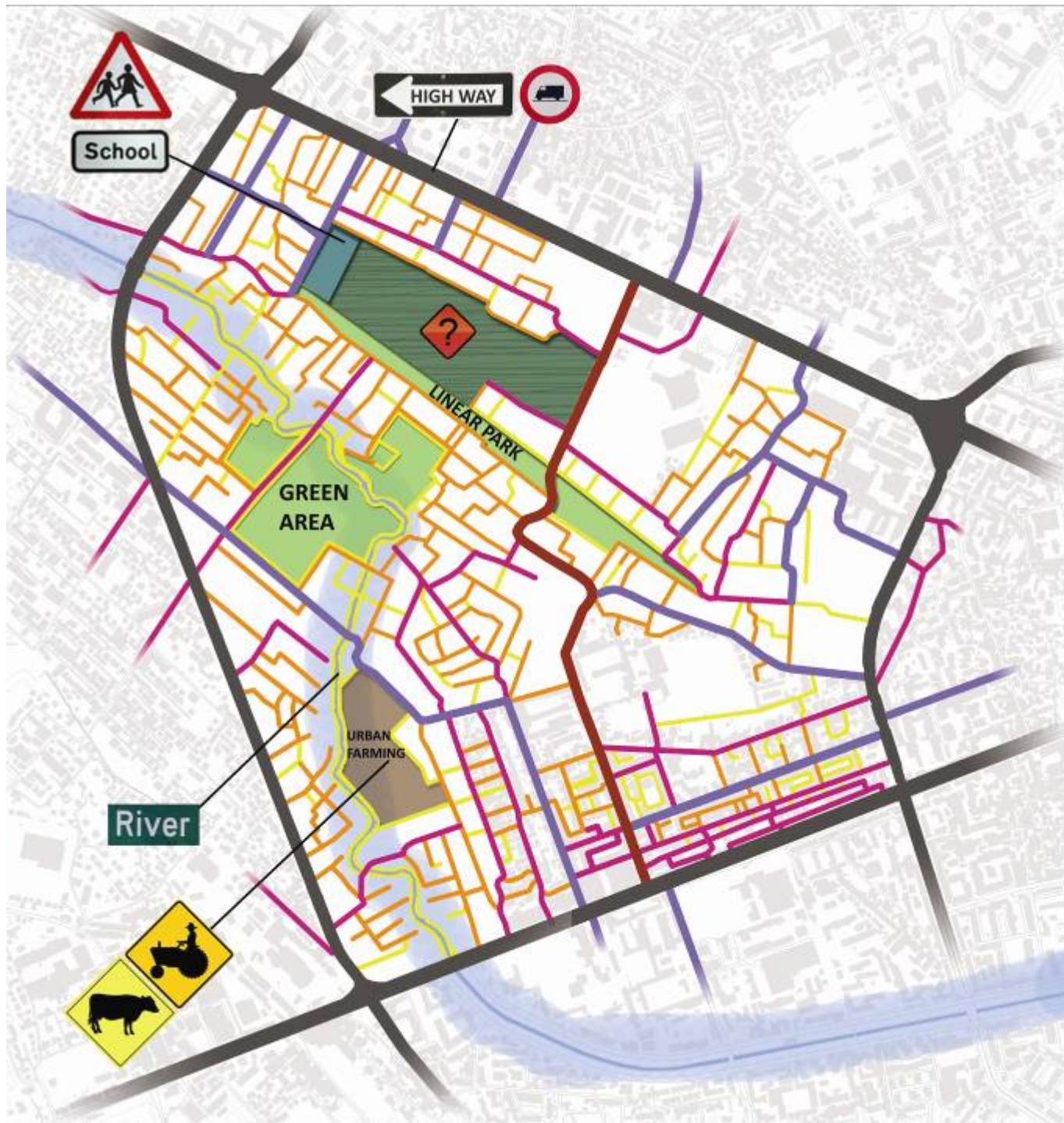


formed green space and squares with public buildings
(youth center, cultural center, services, etc.)



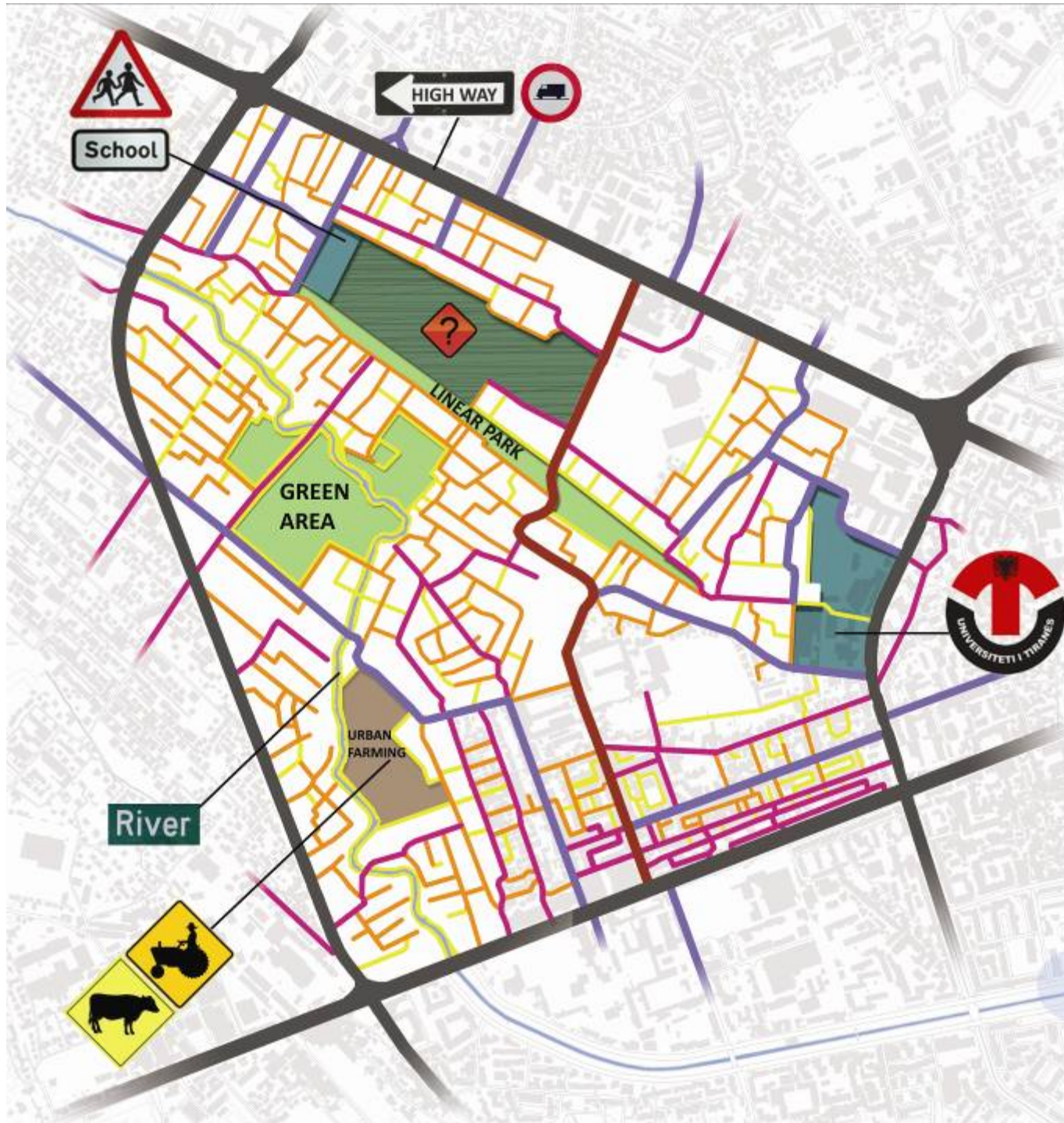
residential area
and green spaces



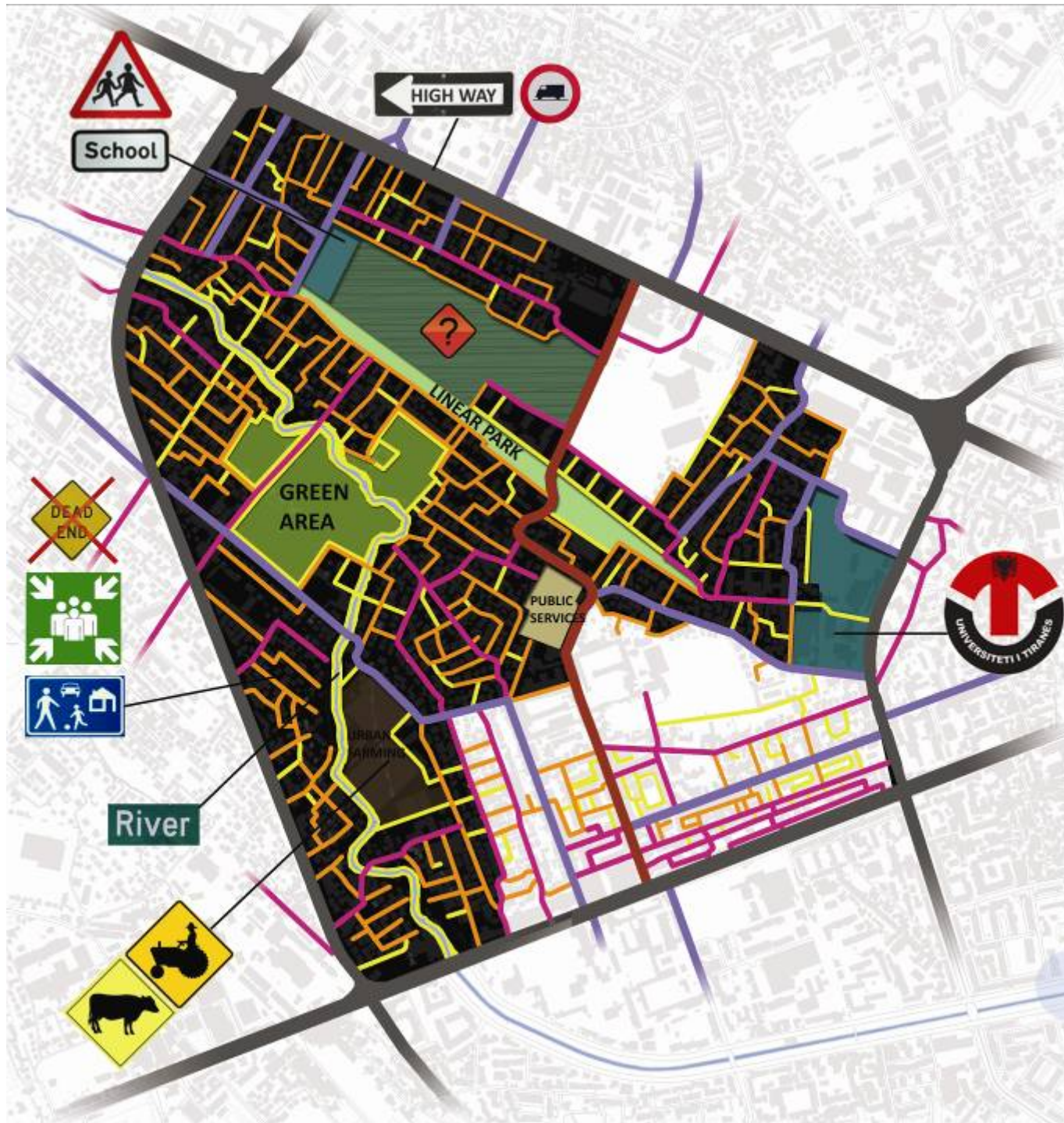


Lana river





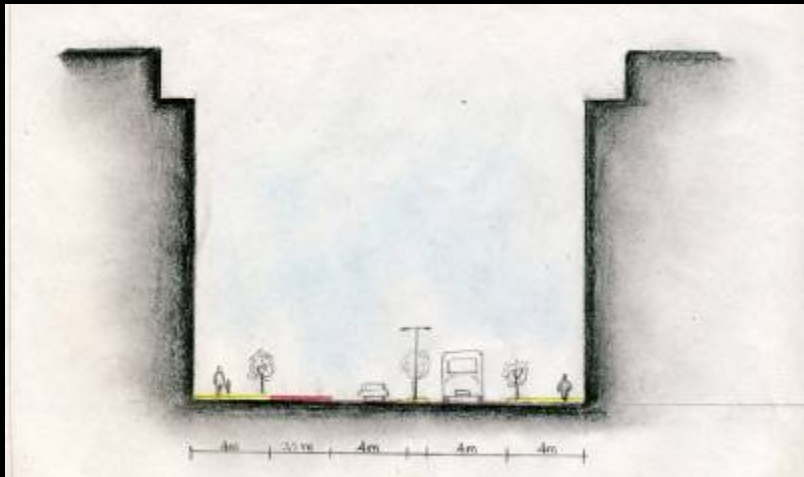
educational area
(north-east boundary)



informal areas

tools - means

- large scale
- intense circulation - heavy vehicles
- bus line (to serve inhabitants of central area)
- wide pavements
- bicycle line

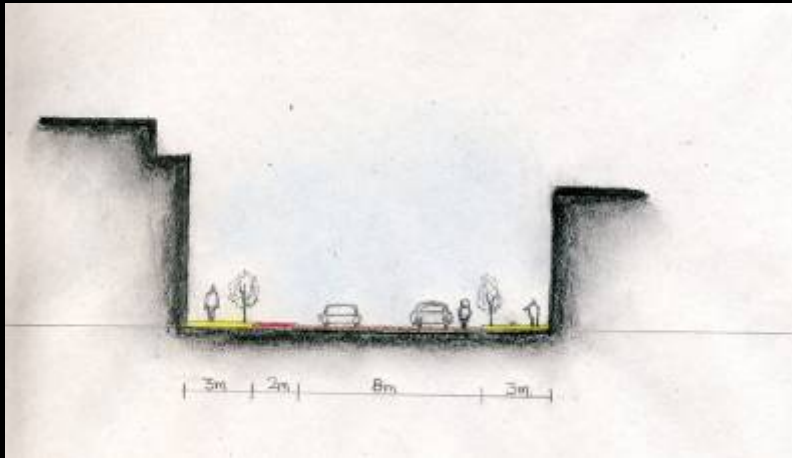


primary road



primary road

- smaller scale but still wide (asfalt)
- less circulation
- no bus
- 2 way
- wide pavements

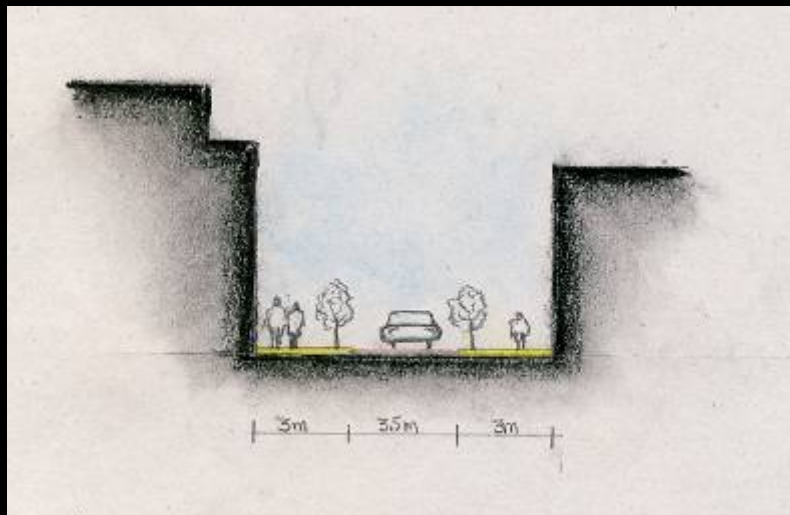


secondary roads



secondary roads

- small scale (asfalt)
- mild circulation
- one way

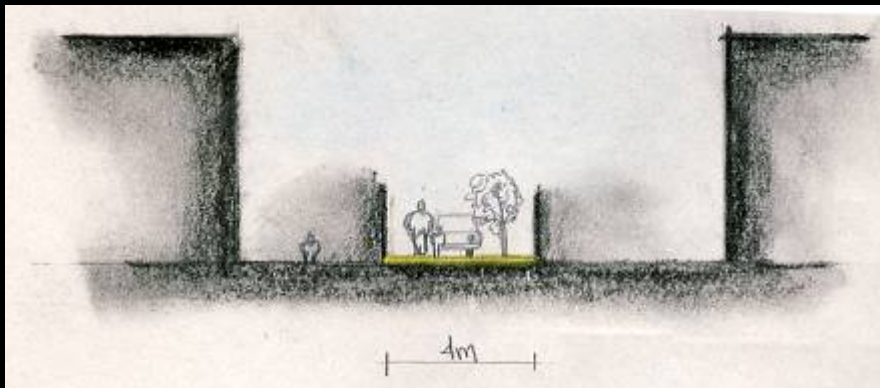


one way local
distributor roads



one way local
distributor
roads

- small scale (paved)
- mainly for pedestrians
- entrance of vehicles to serve inhabitants
- very mild circulation
- plantation

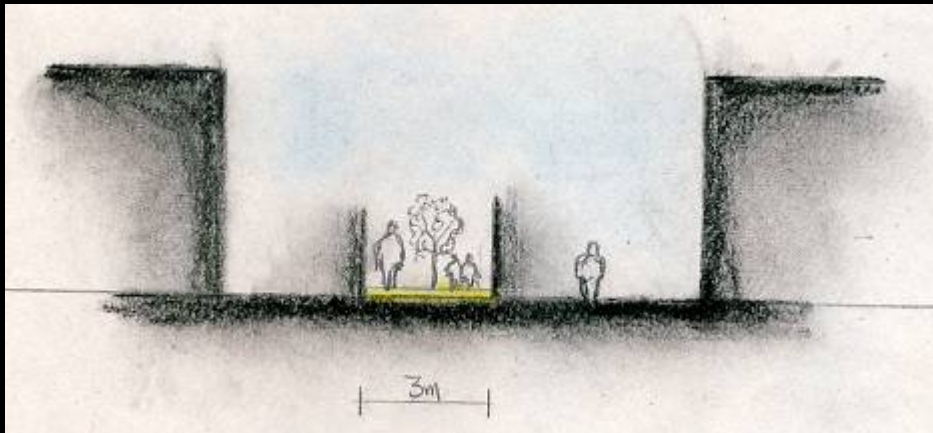


woonerfs



woonerfs

- small scale (paved)
- only for pedestrians
- plantation



pedestrian steets



pedestrian
steets

informal housing area
example



poles of life

informal
housing
example





